



Get directions My places

Collaborate **EDIT**

Save to My Places

Explore making custom maps in an [interactive tutorial](#).

24 Hours for Haiti - 2012 Route

Public · 3 Collaborators · 139 views
Created on May 10 · By GWR90 · Updated 15 hours ago
Rate this map Write a comment KML

- From: 10612 Kingston Pike, Knoxville, TN 37922
- Driving directions to Raleigh, NC**
377 mi - about 6 hours 22 mins
- To: Raleigh, NC
- Driving directions to Charleston, SC
279 mi - about 4 hours 33 mins
- To: Charleston, SC
- Driving directions to Greenville, SC
213 mi - about 3 hours 23 mins
- To: Greenville, SC
- To: 10612 Kingston Pike, Knoxville, TN
- Driving directions to 10612 Kingston Pike, Knoxville, TN
182 mi - about 3 hours 7 mins

Report a problem

Driving directions to Raleigh, NC
Last Updated by GWR90 15 hours ago

Starting from TN-1 W/US-11 S/US-70 W/Kingston Pike

- 1 Head west on TN-1 W/US-11 S/US-70 W/Kingston Pike toward Lovell Rd
- 2 Take the 1st right onto TN-131 N/Lovell Rd
- 3 Turn right to merge onto I-40 E/I-75 N Continue to follow I-40 E Entering North Carolina
- 4 Slight left to stay on I-40 E
- 5 Merge onto I-40 E/I-85 N
- 6 Slight right onto I-40 E
- 7 Take exit 298B for S Saunders St N toward Raleigh/Downtown
- 8 Merge onto S Saunders St
- 9 Slight right onto McDowell St
- 10 Take the 1st right onto W South St Arriving at E South St

Total: 377 mi - about 6 hours 22 mins



Get directions My places

Save to My Places

EDIT

Collaborate

Explore making custom maps in an interactive tutorial.

24 Hours for Haiti - 2012 Route

Public · 3 Collaborators · 139 views
 Created on May 10 · By GWR90 · Updated 15 hours ago
 Rate this map · Write a comment · KML

From: 10612 Kingston Pike, Knoxville, TN 37922

Driving directions to Raleigh, NC
 377 mi - about 6 hours 22 mins

To: Raleigh, NC

Driving directions to Charleston, SC
 279 mi - about 4 hours 33 mins

To: Charleston, SC

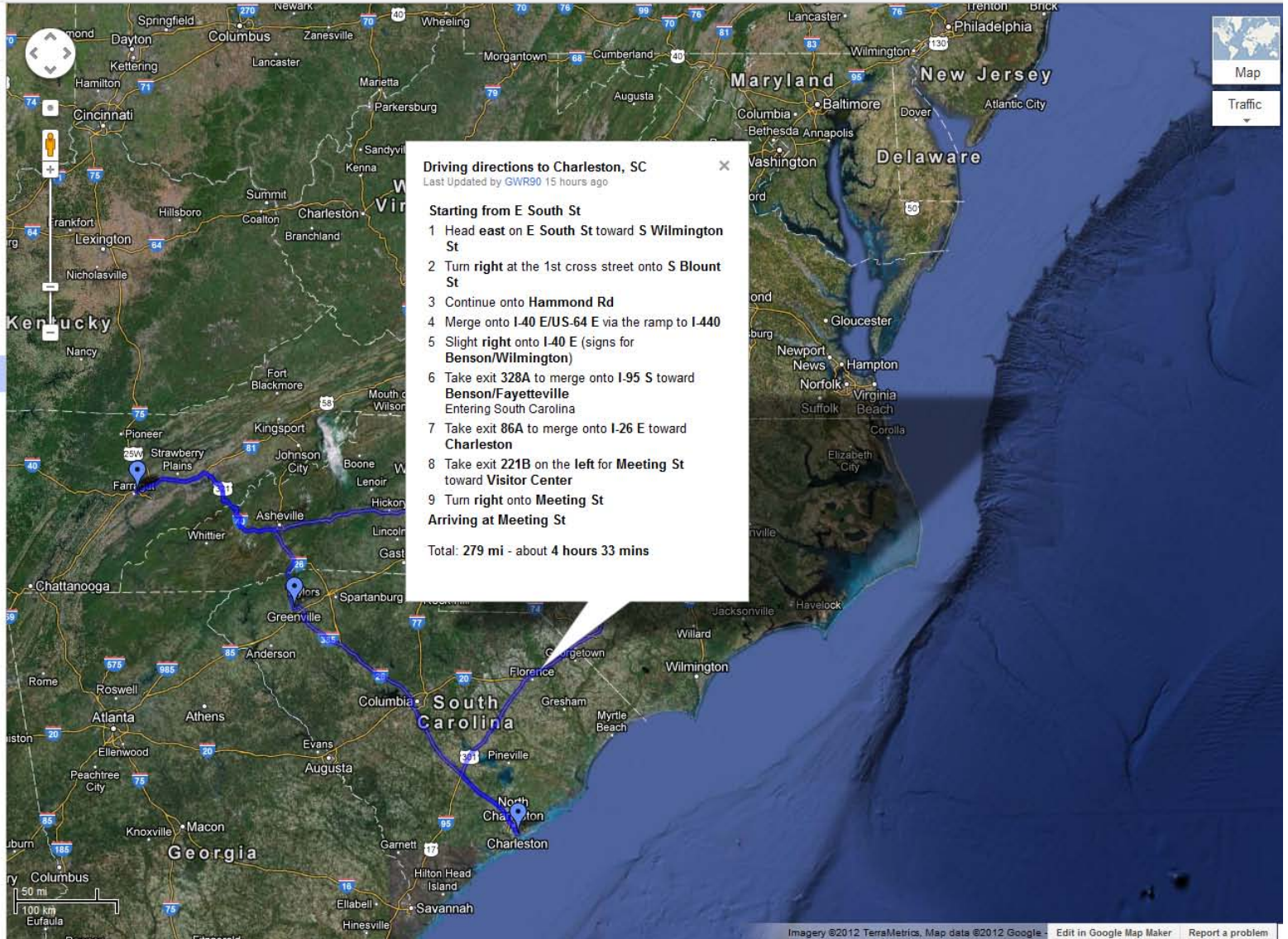
Driving directions to Greenville, SC
 213 mi - about 3 hours 23 mins

To: Greenville, SC

To: 10612 Kingston Pike, Knoxville, TN

Driving directions to 10612 Kingston Pike, Knoxville, TN
 182 mi - about 3 hours 7 mins

Report a problem





Google

Get directions

My places



Save to My Places

EDIT

Collaborate

Explore making custom maps in an [interactive tutorial](#).

24 Hours for Haiti - 2012 Route

Public · 3 Collaborators · 142 views
Created on May 10 · By GWR90 · Updated 15 hours ago
[Rate this map](#) · [Write a comment](#) · [KML](#)

From: 10612 Kingston Pike, Knoxville, TN 37922

Driving directions to Raleigh, NC

377 mi - about 6 hours 22 mins

To: Raleigh, NC

Driving directions to Charleston, SC

279 mi - about 4 hours 33 mins

To: Charleston, SC

Driving directions to Greenville, SC

213 mi - about 3 hours 23 mins

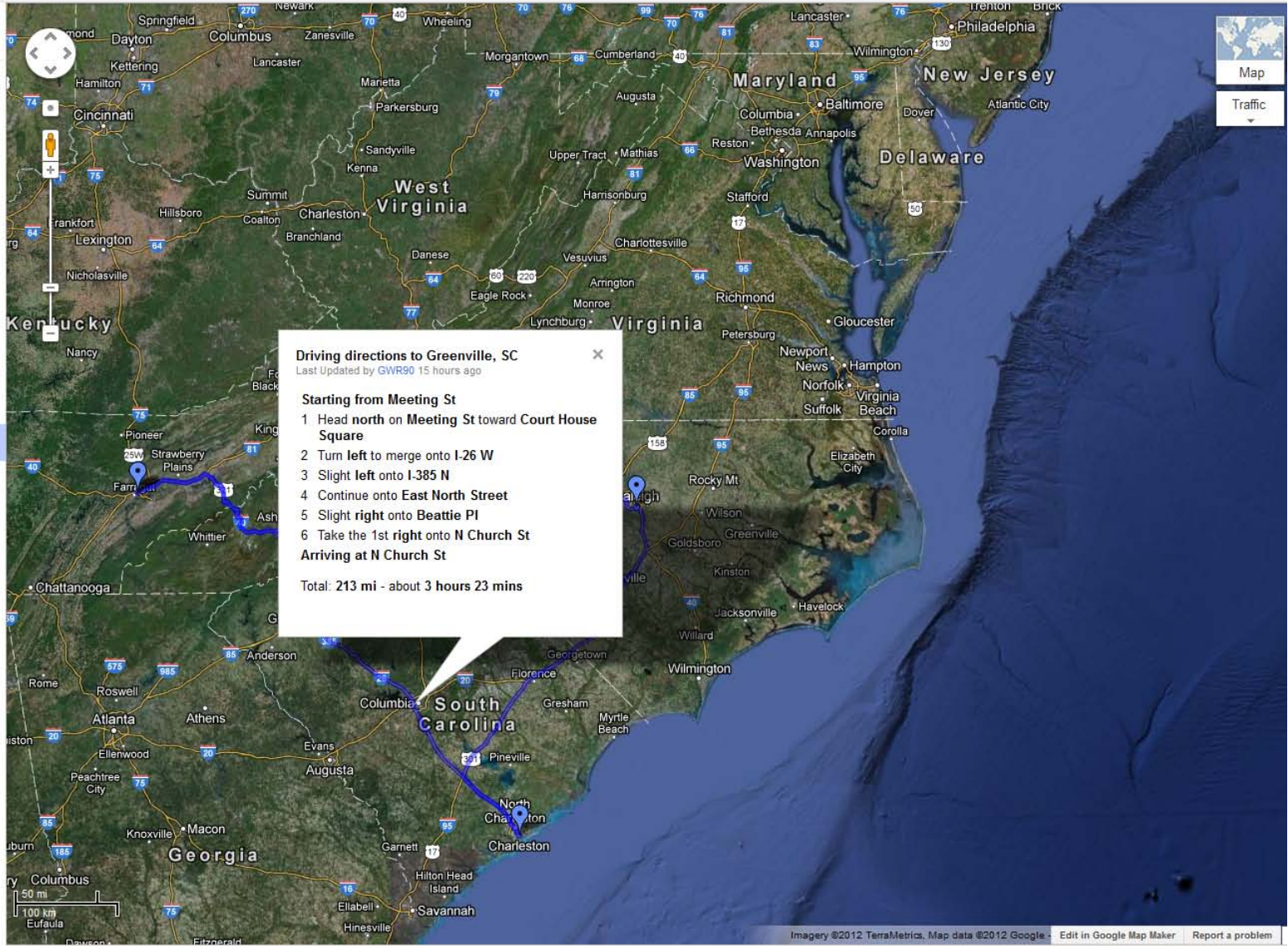
To: Greenville, SC

To: 10612 Kingston Pike, Knoxville, TN

Driving directions to 10612 Kingston Pike, Knoxville, TN

182 mi - about 3 hours 7 mins

[Report a problem](#)



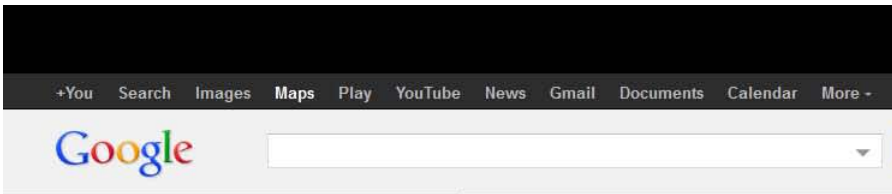
Driving directions to Greenville, SC
Last Updated by GWR90 15 hours ago

Starting from Meeting St

- 1 Head north on Meeting St toward Court House Square
- 2 Turn left to merge onto I-26 W
- 3 Slight left onto I-385 N
- 4 Continue onto East North Street
- 5 Slight right onto Beattie Pl
- 6 Take the 1st right onto N Church St

Arriving at N Church St

Total: 213 mi - about 3 hours 23 mins



Get directions My places Save to My Places

Collaborate EDIT

Explore making custom maps in an [interactive tutorial](#).

24 Hours for Haiti - 2012 Route

Public · 3 Collaborators · 142 views
Created on May 10 · By GWR90 · Updated 15 hours ago
[Rate this map](#) · [Write a comment](#) · [KML](#)

- From: 10612 Kingston Pike, Knoxville, TN 37922
- Driving directions to Raleigh, NC
377 mi - about 6 hours 22 mins
- To: Raleigh, NC
- Driving directions to Charleston, SC
279 mi - about 4 hours 33 mins
- To: Charleston, SC
- Driving directions to Greenville, SC
213 mi - about 3 hours 23 mins
- To: Greenville, SC
- To: 10612 Kingston Pike, Knoxville, TN
- Driving directions to 10612 Kingston Pike, Knoxville, TN**
182 mi - about 3 hours 7 mins

[Report a problem](#)

Driving directions to 10612 Kingston Pike, Knoxville, TN
Last Updated by GWR90 15 hours ago

Starting from N Church St

- 1 Head **northeast** on **N Church St** toward **E Elford St**
- 2 Turn **left** onto **N Academy St**
- 3 Turn **right** onto **College St**
- 4 Continue straight onto **Buncombe St**
- 5 Turn **right** onto **US-276 N/Rutherford St**
Continue to follow **US-276 N**
- 6 Merge onto **US-25 N** via the ramp to **Asheville**
Entering **North Carolina**
- 7 Keep **left** at the fork, follow signs for **I-26/Hendersonville/Asheville** and merge onto **I-26 W**
- 8 Slight **left** onto **US-74 W**
- 9 Merge onto **I-40 W**
Entering **Tennessee**
- 10 Slight **left** to stay on **I-40 W**
- 11 Take exit **376** to merge onto **I-140 E** toward **Maryville**
- 12 Take exit **1B** for **US-11 S/US-70 W/Kingston Pike**

Map showing driving directions from Knoxville, TN to Raleigh, NC. The route is highlighted in blue and passes through Asheville, NC. The map includes labels for states (Maryland, New Jersey, Delaware, Virginia, North Carolina, South Carolina, Georgia) and major cities (Pittsburgh, Washington, Richmond, Raleigh, Charlotte, Atlanta, Knoxville).

Imagery ©2012 TerraMetrics. Map data ©2012 Google. Edit in Google Map Maker Report a problem